

IN THE HEIGHTS

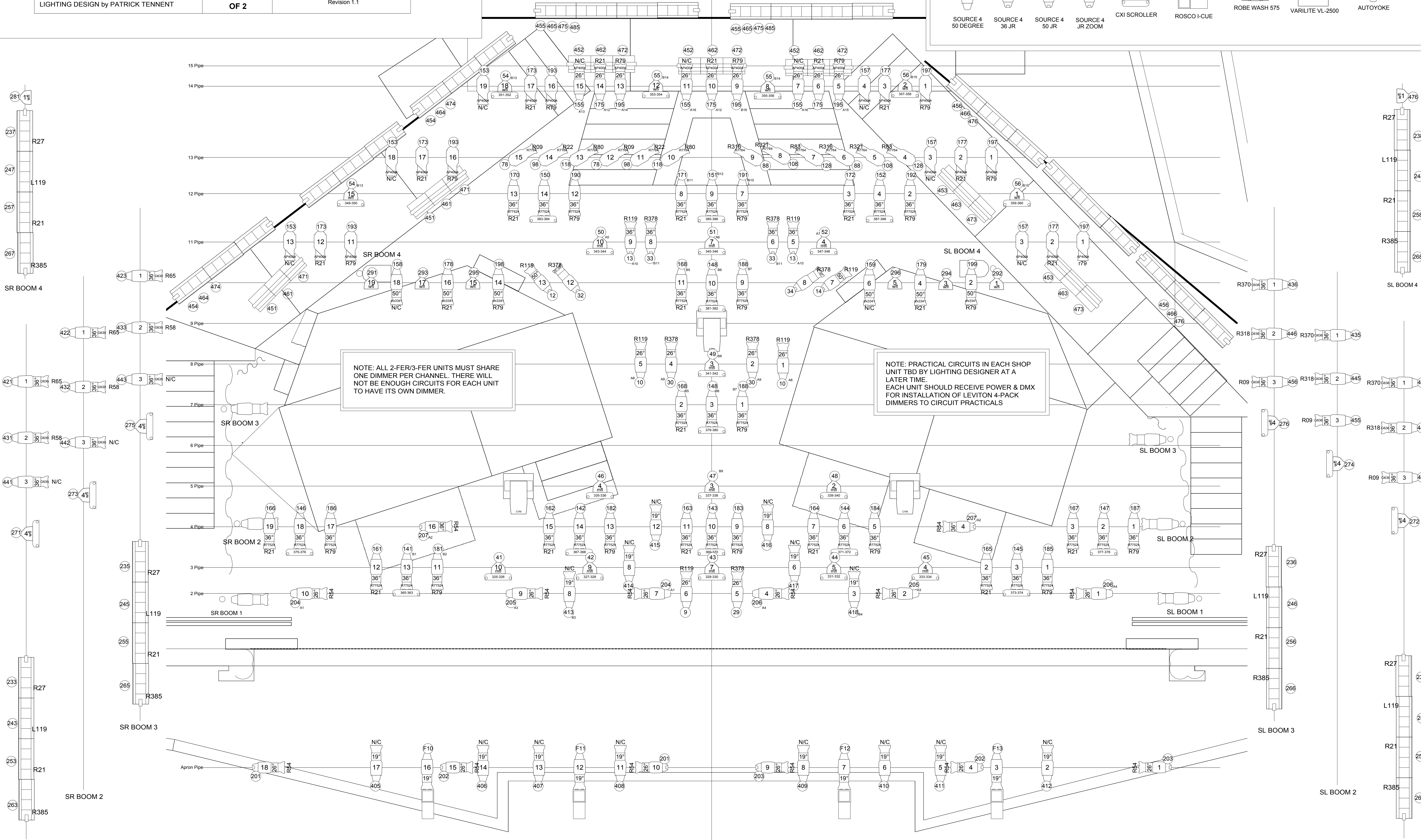
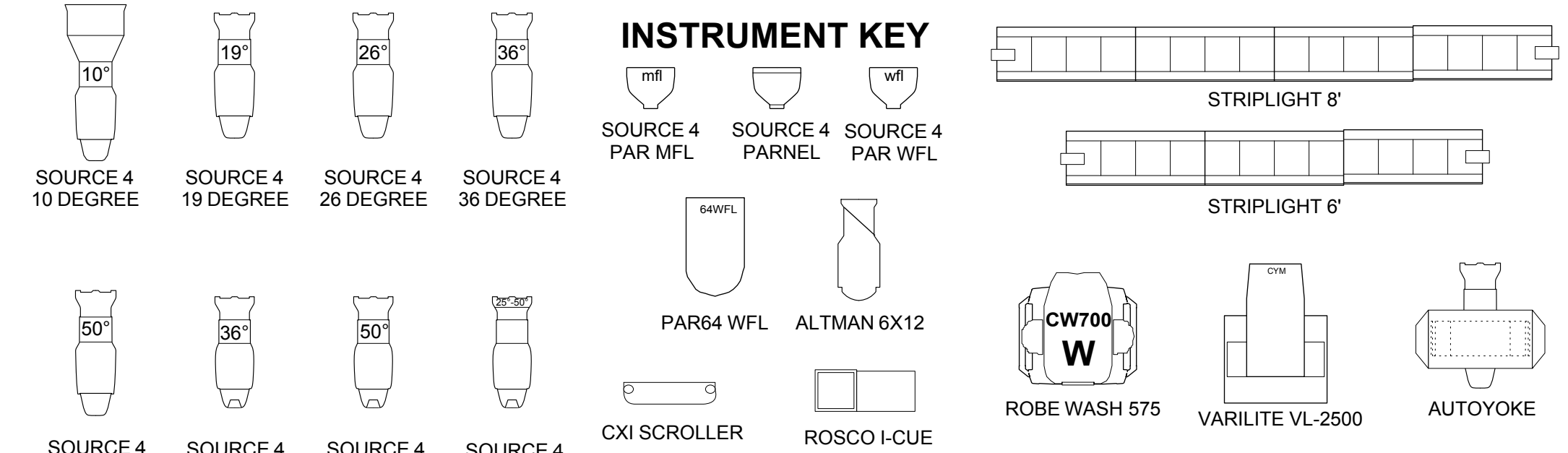
LIGHT PLOT - STAGE POSITIONS

ACTORS' PLAYHOUSE PRODUCTIONS
CORAL GABLES, FL
DIRECTED by DAVID ARISCO
SET DESIGN by SEAN McCLELLAND
LIGHTING DESIGN by PATRICK TENNENT

PLATE
2
OF 2

SCALE: 1/2"=1'-0"
FEBRUARY 20, 2013
Revision 1.1

ALL STRIPLIGHTS MOUNT TO PLATFORMS
EXACT PLACEMENT TBD



NOTE: ALL 2-FER/3-FER UNITS MUST SHARE ONE DIMMER PER CHANNEL. THERE WILL NOT BE ENOUGH CIRCUITS FOR EACH UNIT TO HAVE ITS OWN DIMMER.

NOTE: PRACTICAL CIRCUITS IN EACH SHOP UNIT TBD BY LIGHTING DESIGNER AT A LATER TIME. EACH UNIT SHOULD RECEIVE POWER & DMX FOR INSTALLATION OF LEVITON 4-PACK DIMMERS TO CIRCUIT PRACTICALS

IN THE HEIGHTS

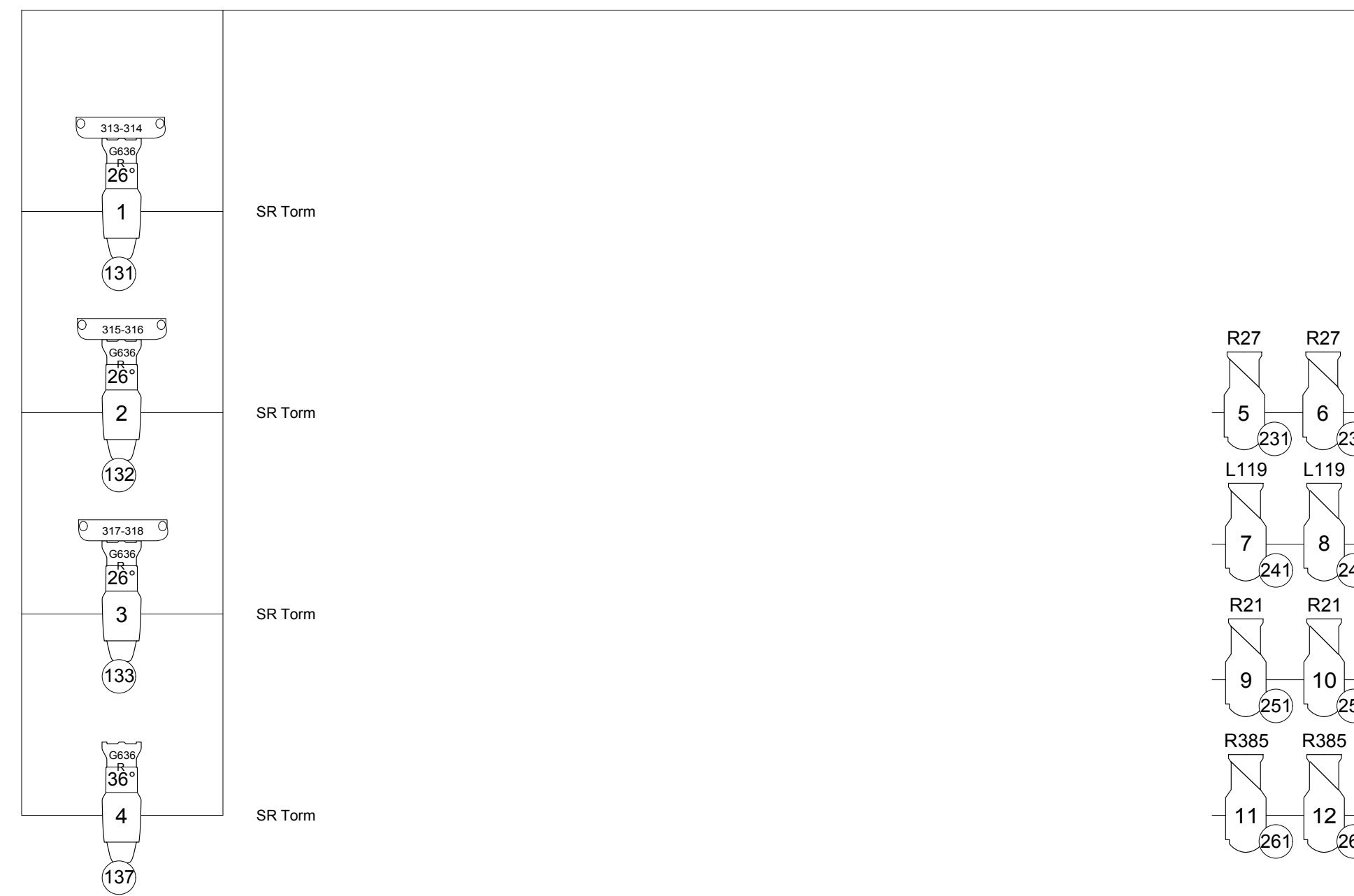
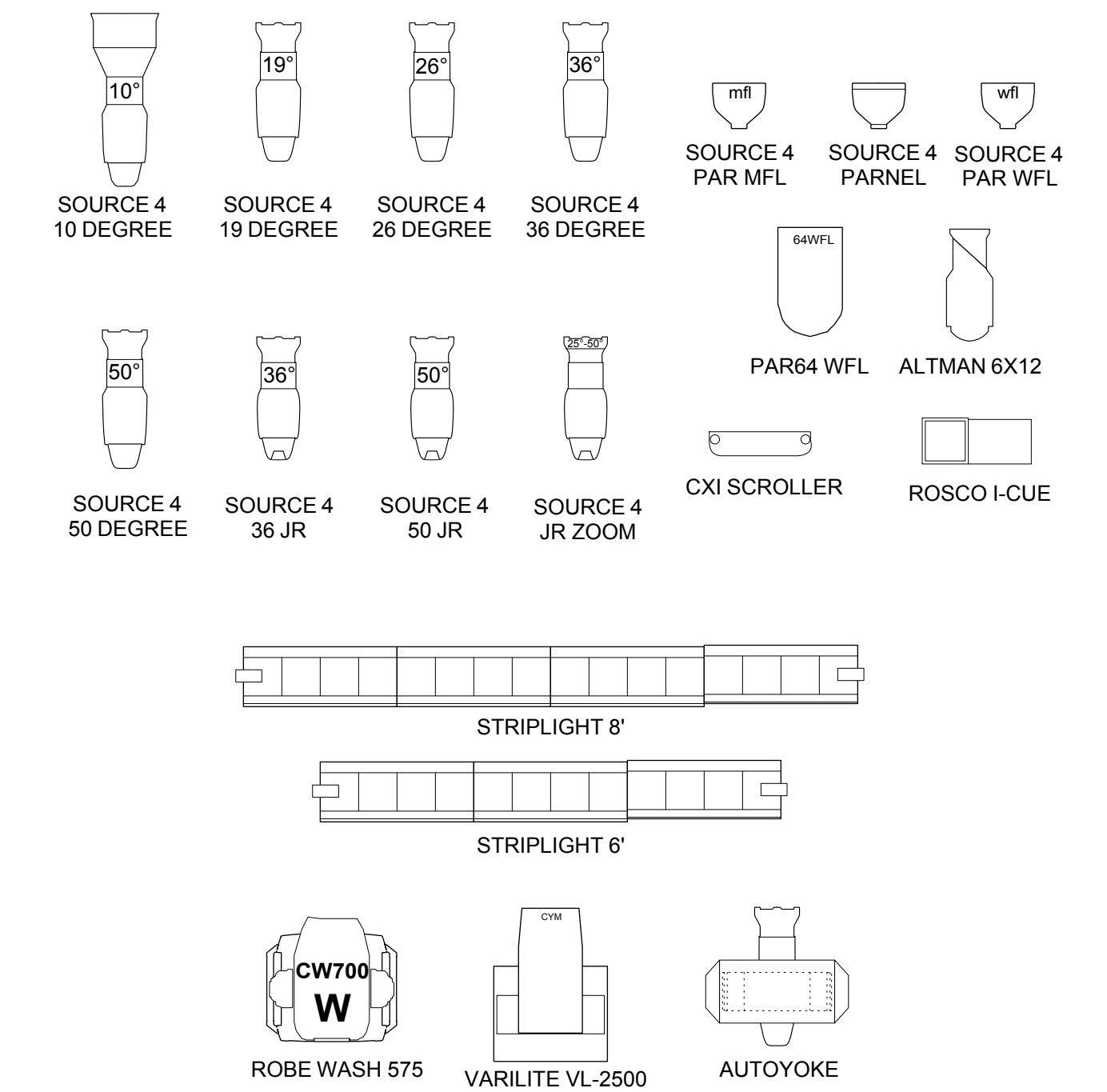
LIGHT PLOT - FOH POSITIONS

ACTORS' PLAYHOUSE PRODUCTIONS
CORAL GABLES, FL
DIRECTED by DAVID ARISCO
SET DESIGN by SEAN McCLELLAND
LIGHTING DESIGN by PATRICK TENNENT

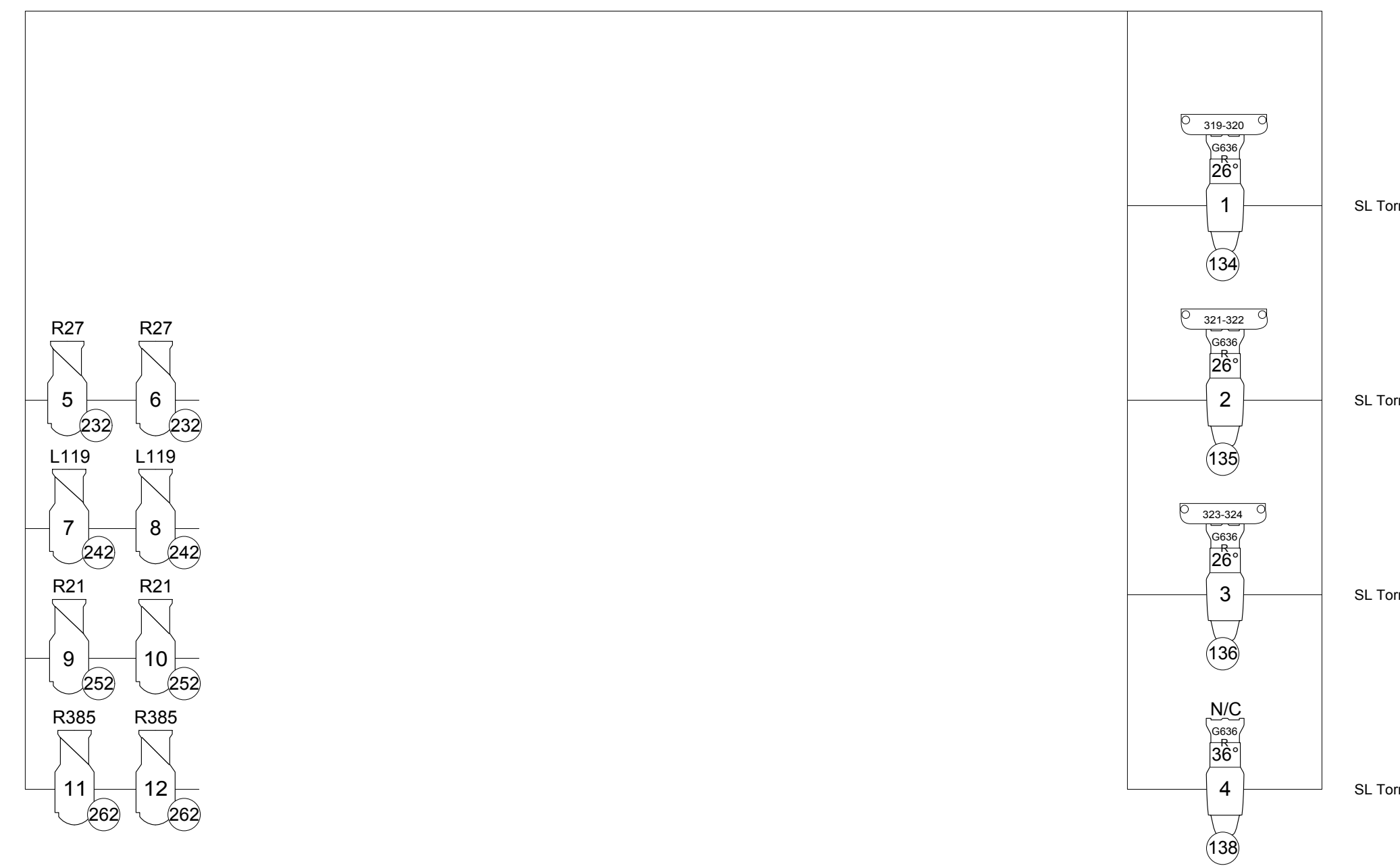
PLATE
1
OF 2

SCALE: 1/2"=1'-0"
FEBRUARY 20, 2013
Revision 1.1

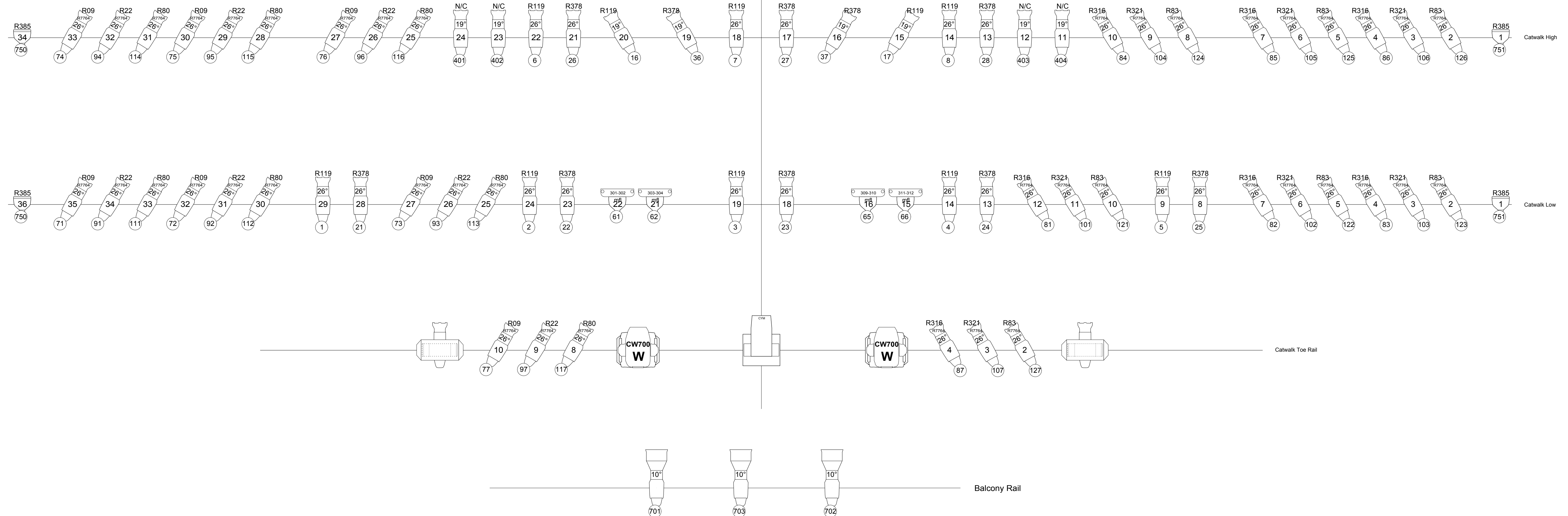
INSTRUMENT KEY



SR TORM



SL TORM



CATWALK & BALCONY RAIL